

A large yellow floating crane is the central focus, positioned on the deck of a ship. The crane's long jib extends diagonally across the frame, and it is lifting a large, dark metal bucket. The background is a vibrant teal sky filled with white, fluffy clouds. The ship's deck and various pieces of equipment are visible in the lower portion of the image.

# Expert 1 and Expert 2

Brand new  
marine floating  
cranes



# The Ganz-Expert cranes

are the implementation of our 17 years experience in open sea bulk cargo transshipment operations multiplied by proven over the years Ganz experience in construction of floating cranes.



The Ganz-Expert cranes are designed to work in open seas in “non-stop” mode 24/7 with loading capacity up to

# 750 tons per hour.

Maximum hoisting height of 25-tons grab is 25 meters and maximum out-reach is 37 meters that makes it possible to load and discharge Capesize and Panamax types of vessels in open sea or port. With the draft of 2,1 meters the cranes can also be used in areas of shallow waters. Two rudder propellers and construction features of pontoon make cranes very maneuverable during mooring operations and enable to move with the speed up to 9 knots.



# Grab operation

25/30 ton at an outreach 37 meters

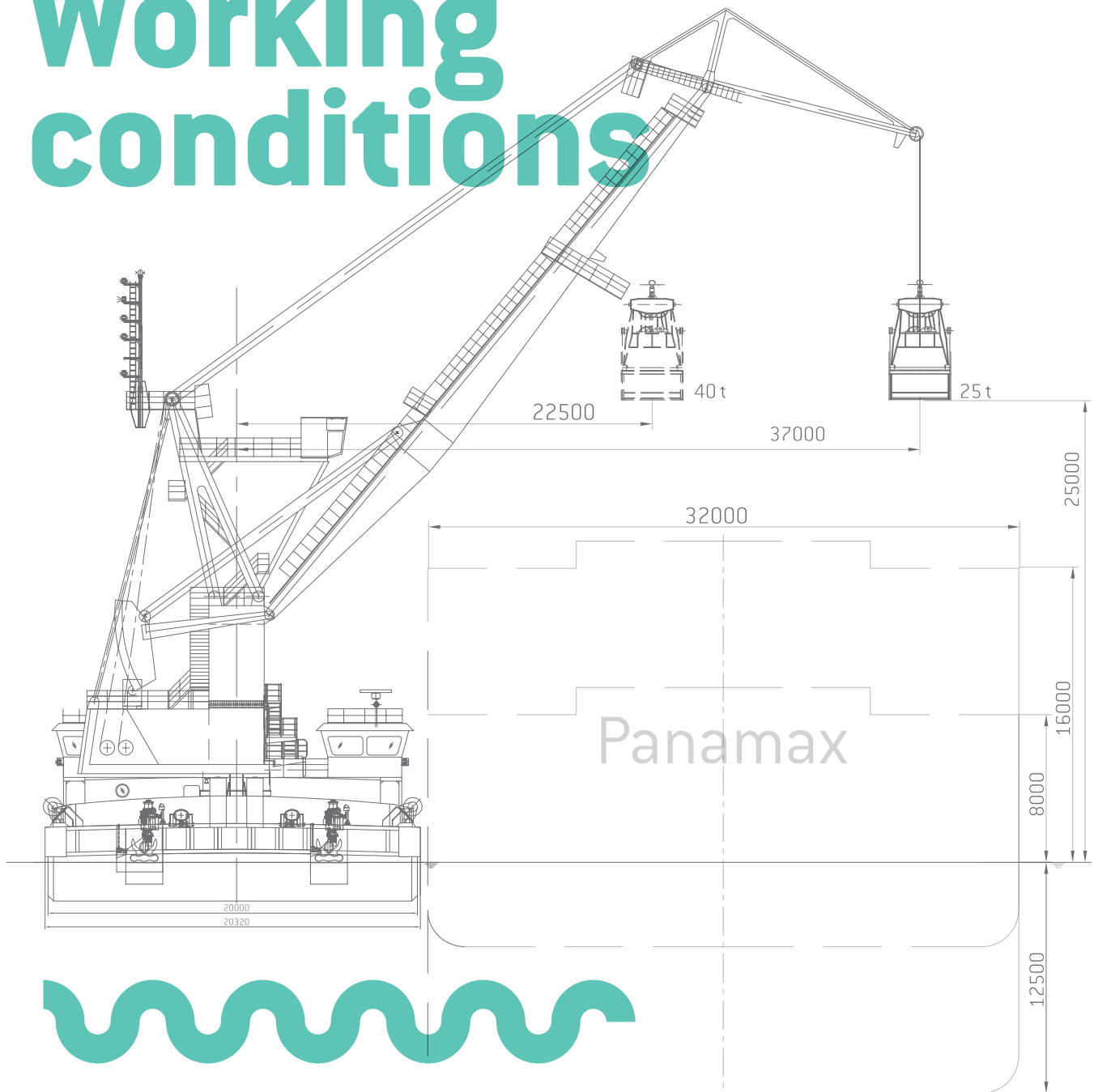




IMO NO  
9698422

ЭКСПЕРТ 2  
ИЗВОДНИК

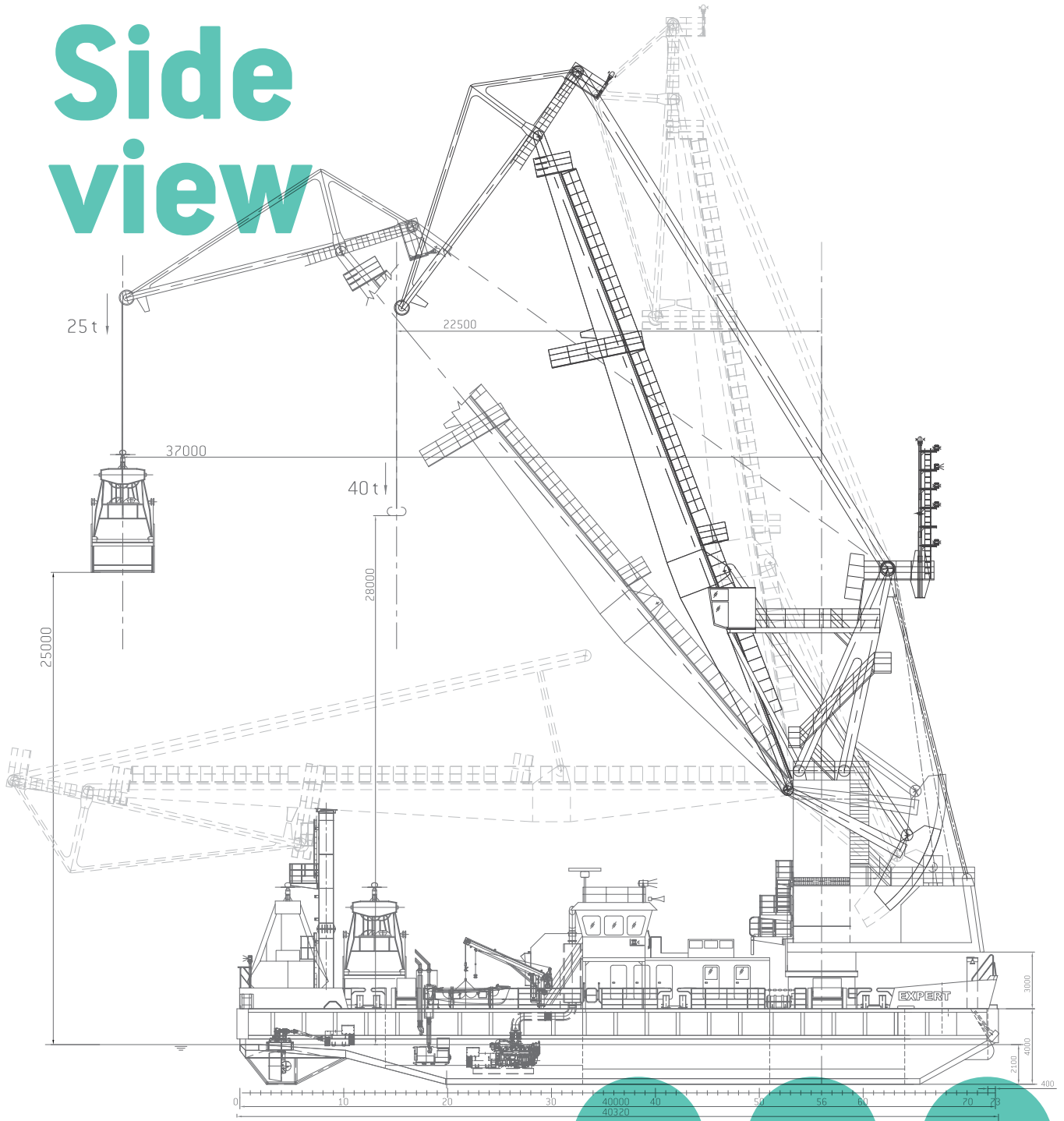
# Working conditions



## Technical data of the crane

Grab operation	25/30 ton at an outreach 37 meters
Hook operation	40 ton at an outreach of 23 m, 30 ton at an outreach of 37 m
Duration of one full cycle with overlapping	75 seconds
Hoisting height	25 meters above water level
Number of full cycles per hour	48
Loading capacity, 25 ton grab	750 ton/hour

# Side view



## Basic data

Type of floating crane	Self-propelled floating crane Ganz-Expert
Classification Society	Russian Maritime Register of Shipping
The class notation	KM Ice1 R3 AUT3 EPP, Floating crane
Length overall	40.32 meters
Breadth extreme	20.32 meters
Maximum draft	2.10 meters
Accommodation	20 persons

# GRANVIK SHIPPING SA

Av. de Rumine 20,  
CH-1005 Lausanne,  
Switzerland  
tel: + 41 21 320 06 12,  
e-mail: sts@f-m.fm

