



GANZ-EXPERT 750

FLOATING CRANES BY GANZ DANUBIUS.

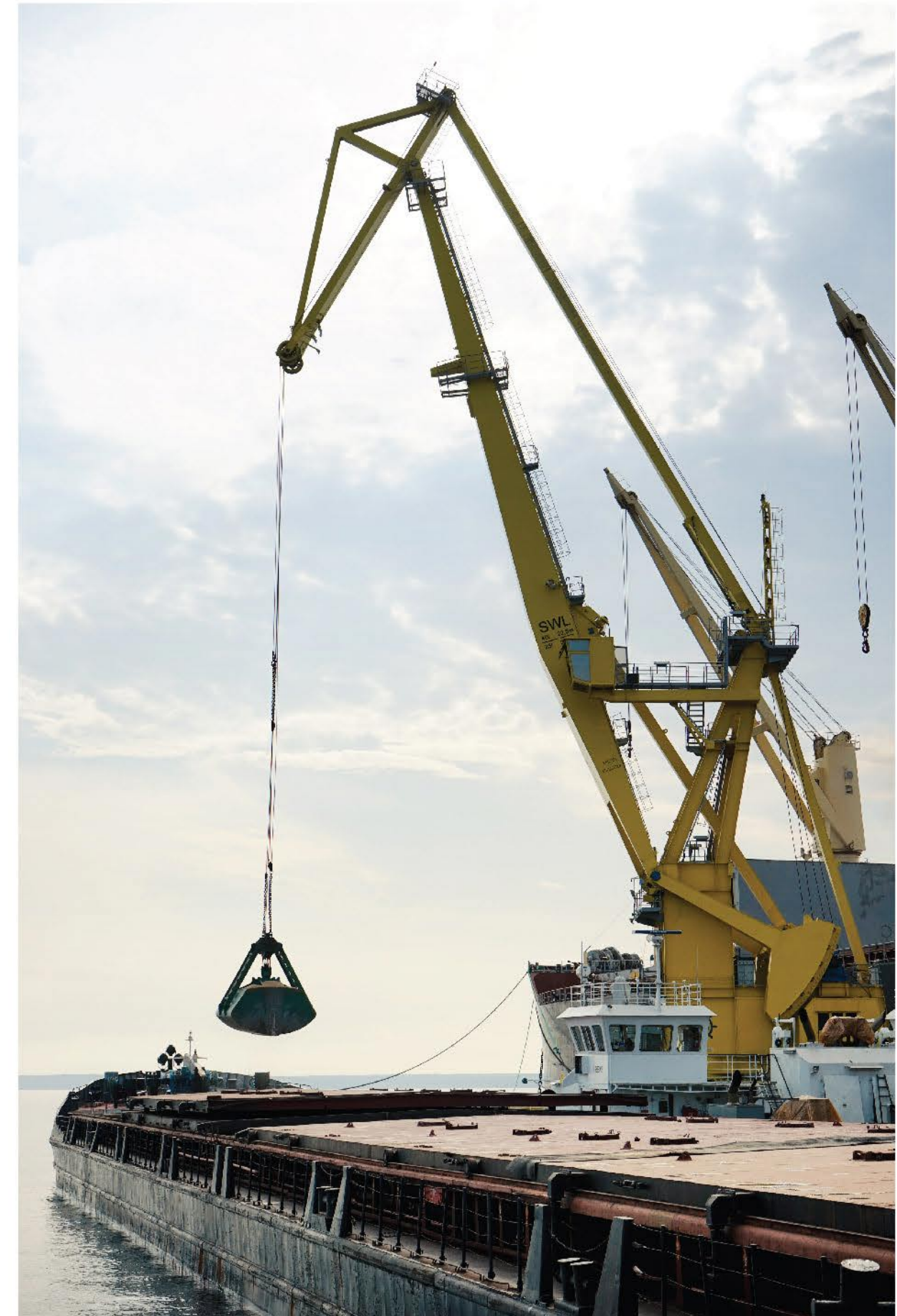
GANZ Danubius Watercraft and Crane Kft
H-1055 Budapest, Szent István Boulevard 7. Hungary.
Telephone / Fax: +36 1 612 22 91. Telefon: +36 30 178 37 35.
Mailto: info@ganz-danubius.com official@ganz-danubius.com





GANZ-Expert cranes

are built under Russian Maritime Register of Shipping supervision in compliance with requirements of Russian Federation flag. The GANZ-Expert cranes are the implementation of our 20-years successful experience in open sea bulk cargo transshipment operations.



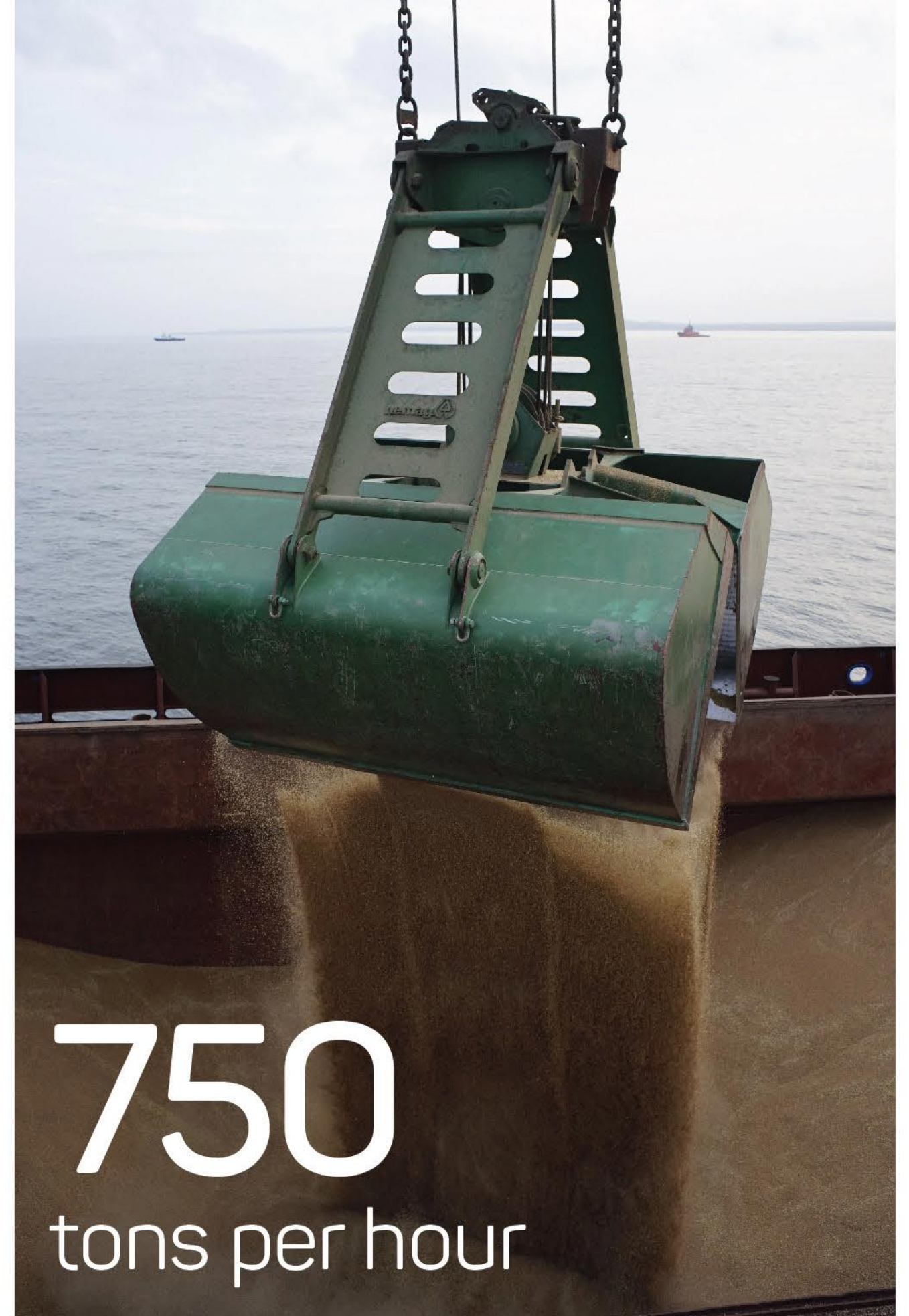
Non-stop mode 24/7

The GANZ-Expert cranes are designed to work in open seas in “non-stop” mode 24/7. The lighting and equipment of the GANZ-Expert cranes guarantee safety during operations in any season and any time of day.



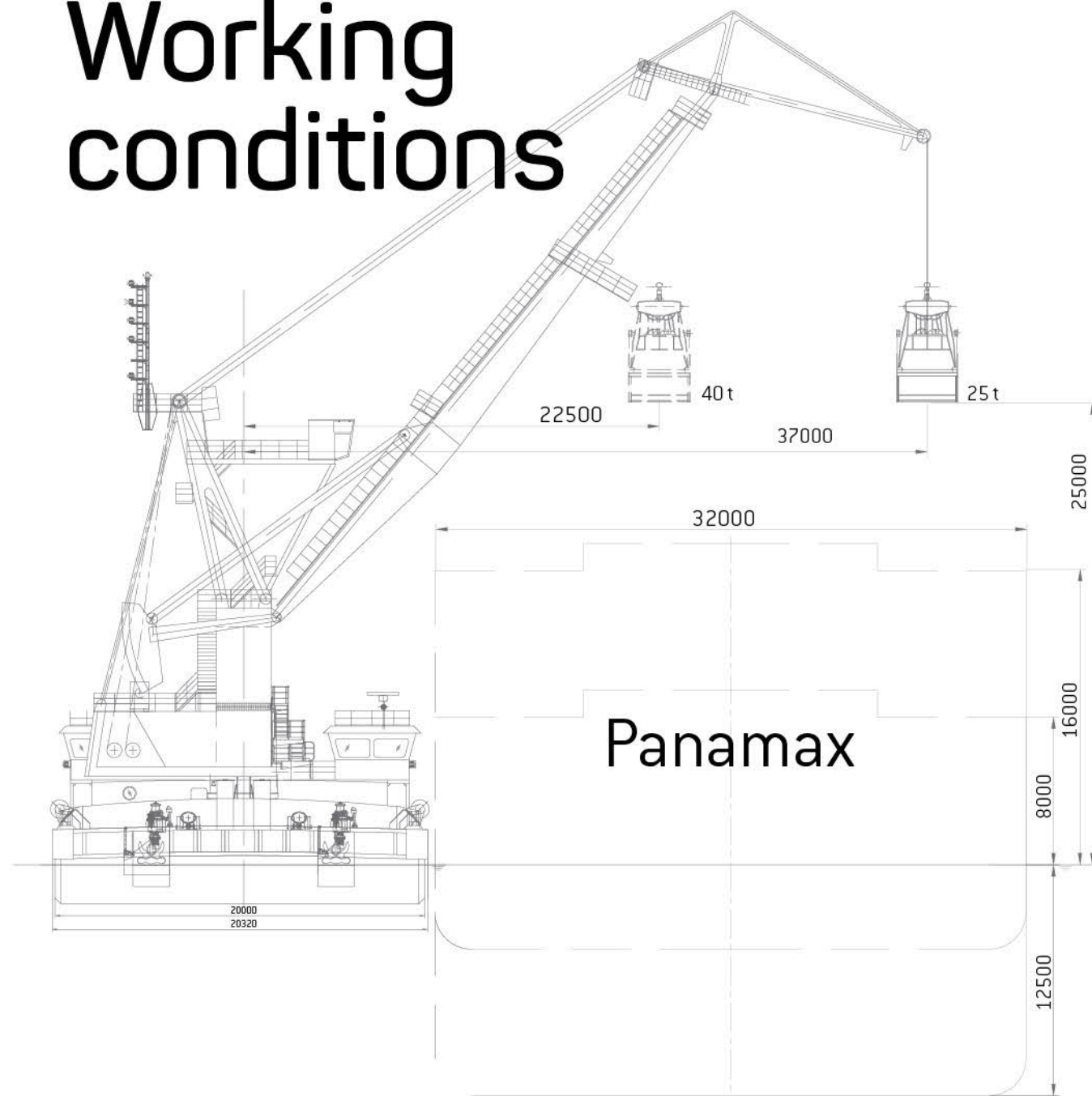
Loading capacity

Loading capacity of the GANZ-Expert cranes is up to 750 tons per hour. 25 meters maximum hoisting height of 25-tons grab with 37 meters maximum outreach make it possible to load and discharge Capesize and Panamax types of vessels in open sea or port.

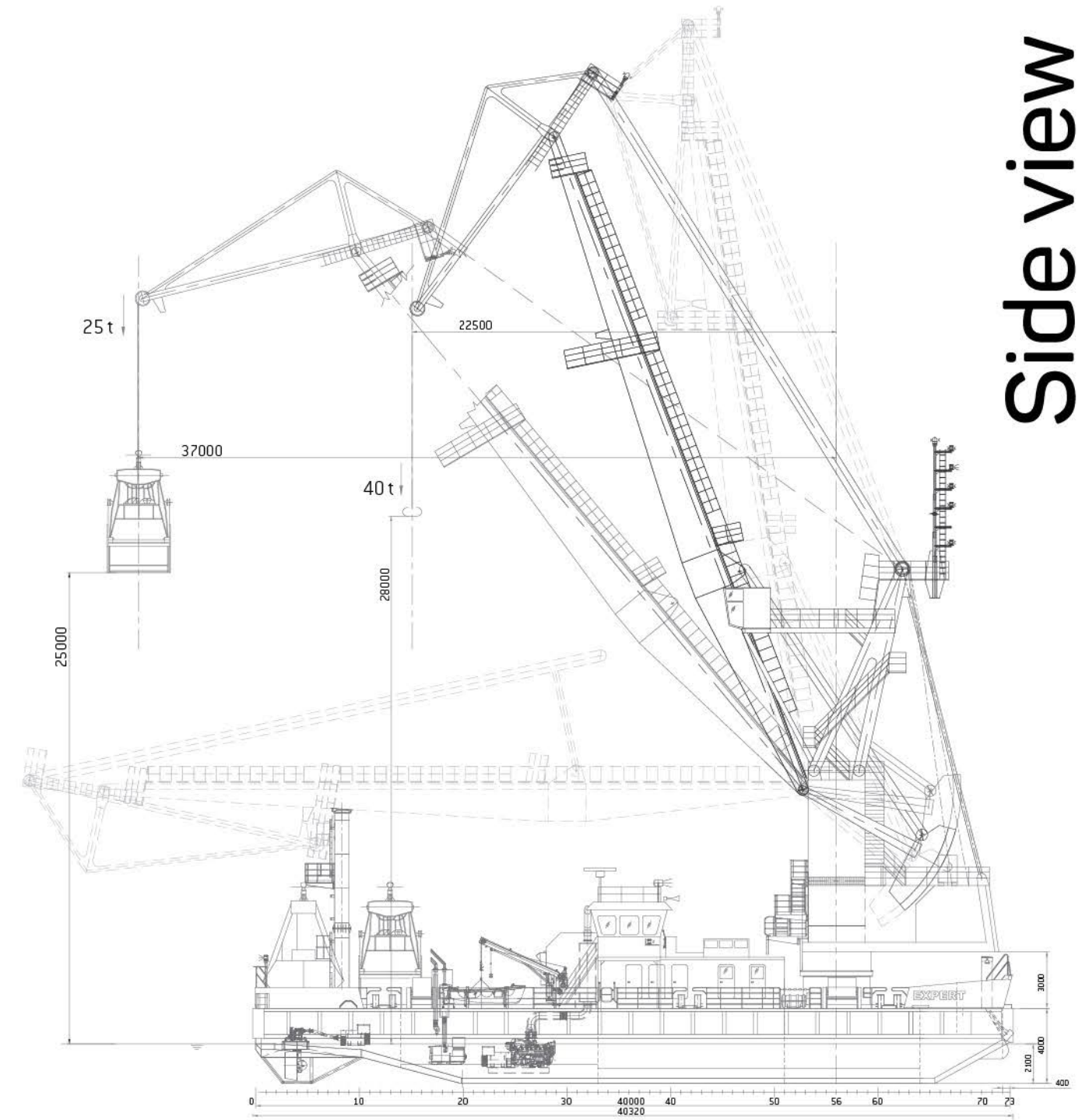


750 tons per hour

Working conditions



Side view

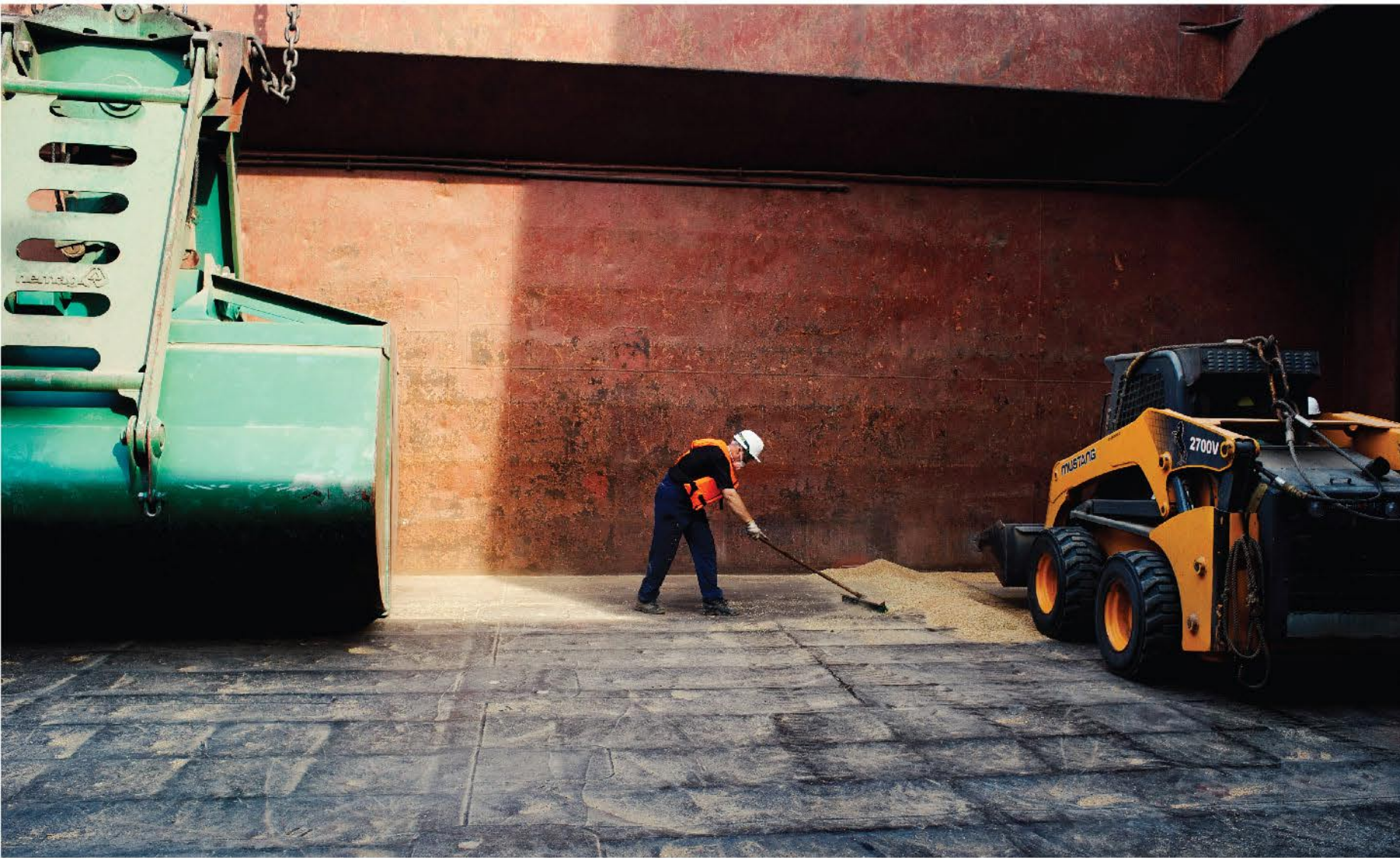


Technical data of the crane

Grab operation	25/30 ton at an outreach 37 meters
Hook operation	40 ton at an outreach of 23 m, 30 ton at an outreach of 37 m
Duration of one full cycle with overlapping	75 seconds
Hoisting height	25 meters above water level
Number of full cycles per hour	48
Loading capacity, 25 ton grab	750 ton/hour

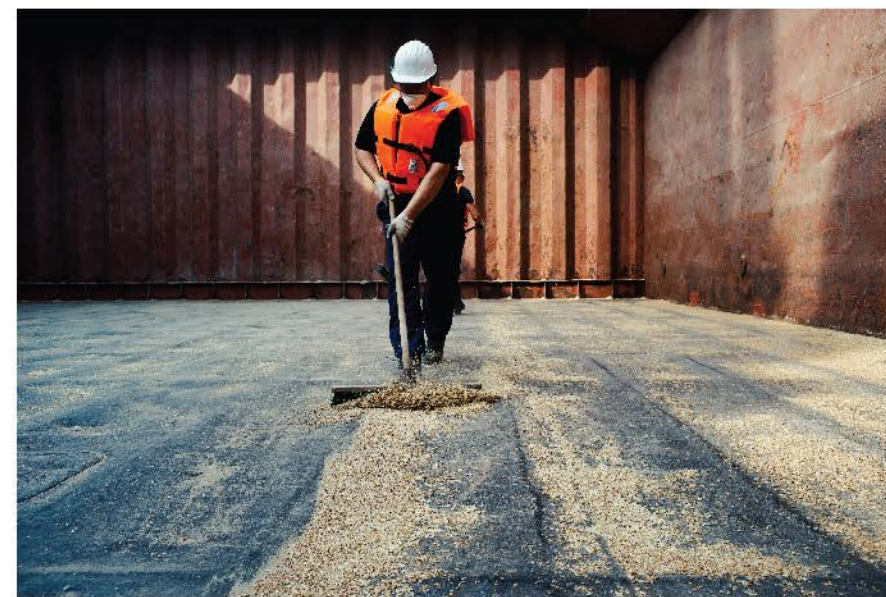
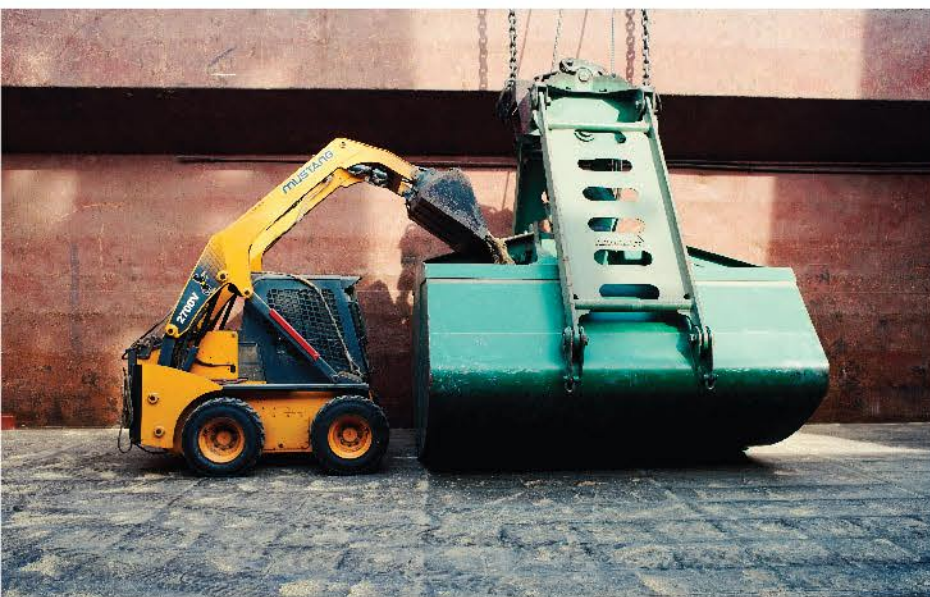
Basic data

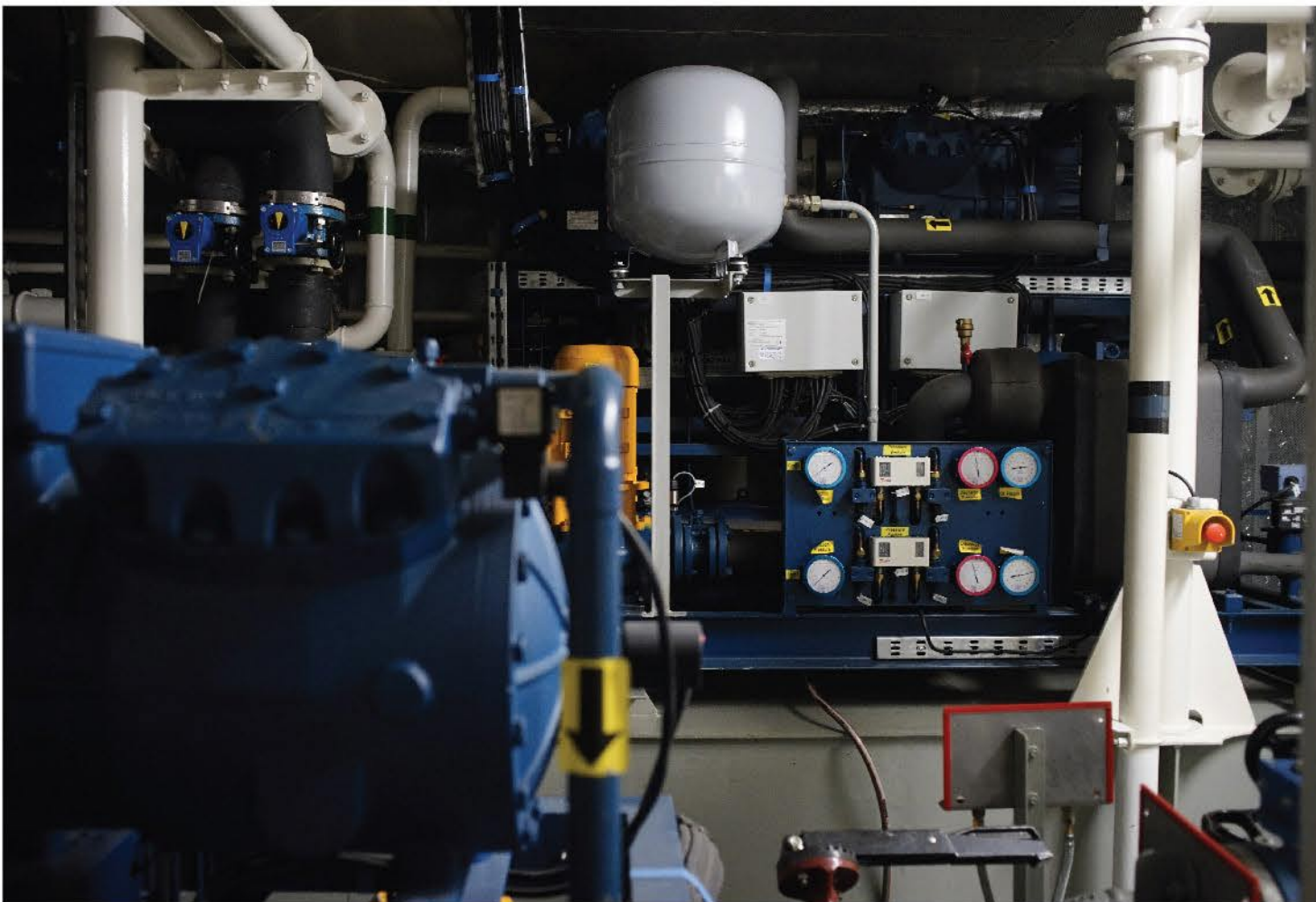
Type of floating crane	Self-propelled floating crane Ganz-Expert
Classification Society	Russian Maritime Register of Shipping
The class notation	KM Ice1 R3 AUT3 EPP, Floating crane
Length overall	40.32 meters
Breadth extreme	20.32 meters
Maximum draft	2.10 meters
Accommodation	20 persons



Holds cleaning

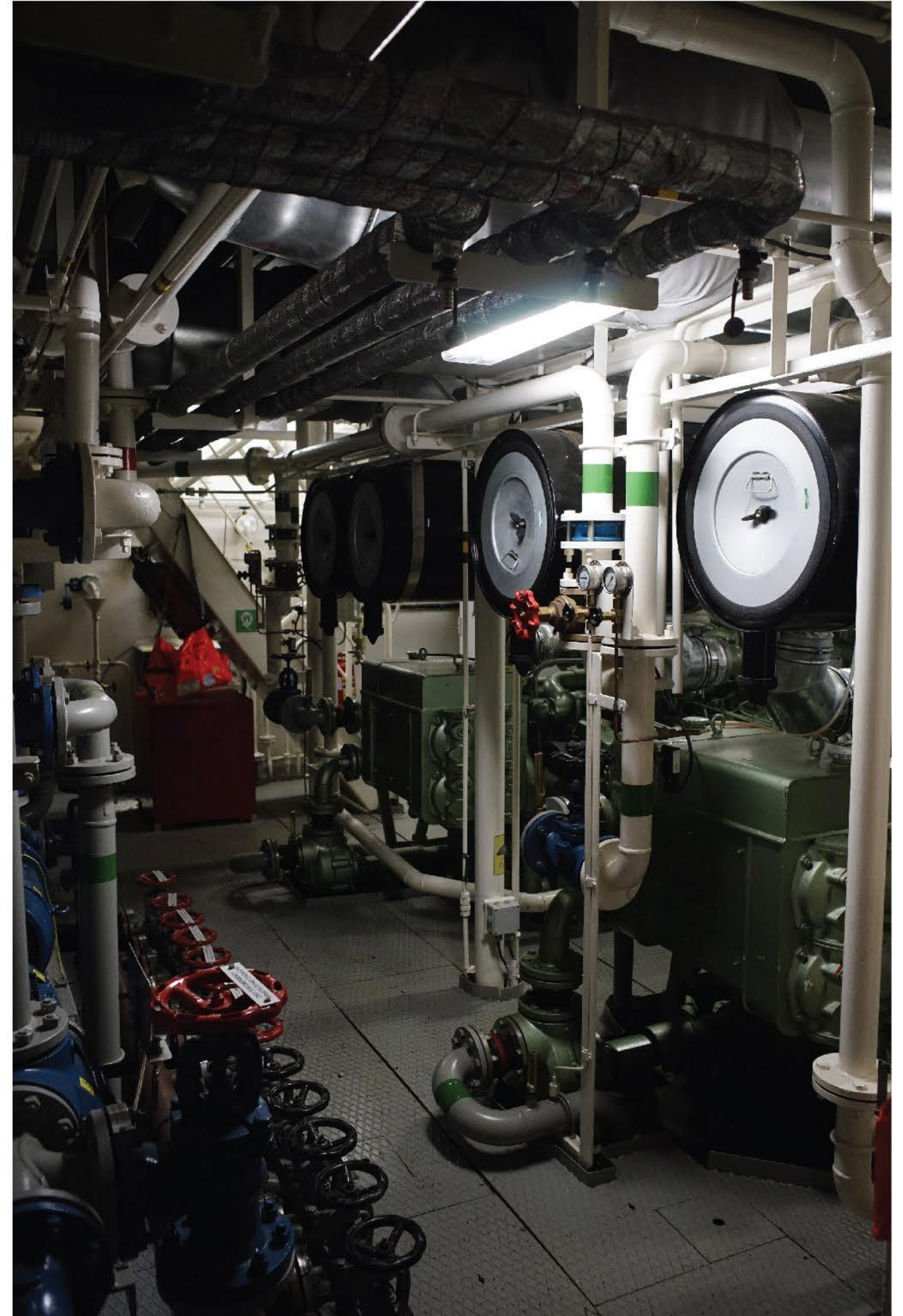
Transshipment service includes holds cleaning. Here you can see crew working on holds cleaning by broom also using skid steer loader Mustang 2700V.





Engine room

Engine room is designed according to the highest safety and reliability standards and international conventions. The GANZ-Expert cranes are equipped with 2 x 726 kW Guascor main engines and Caterpillar diesel generators with daily diesel oil consumption of about 600 liters.





Crane crew

The GANZ-Expert cranes are equipped with rooms and cabins compliant to MLC convention and are comfortable for work and rest for crew on board.





Navigation bridge

The navigation bridge is fitted with modern navigation equipment fulfilling the latest requirements of international conventions.

